



SD45 Shower Pan Drain

PRODUCT Specifications



SD45 Shower Drain
ABS with stainless steel
grate

CONNECTION (a):
2" ABS/DWV Hub

FINISHES AVAILABLE (d):
CP = Chrome Plate
BN = Brushed Nickel
PB = Polished Brass
VB = Venetian Bronze
W = White

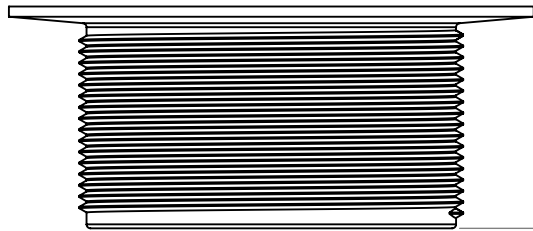
CERTIFICATIONS:



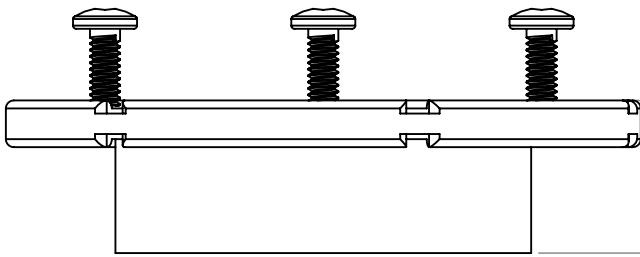
Drawn by: Chris McLeod
Date: 2011SEP12
Checked by: Mike Pinet
Oakville Stamping & Bending Ltd.
Units: Inches
Scale: 2:3 (line drawing)
1:5 (illustration)



Ø 4.262

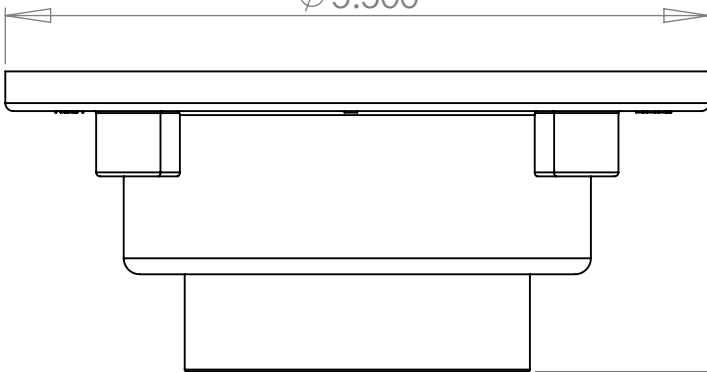


1.733



1.193

Ø 5.500



2.345