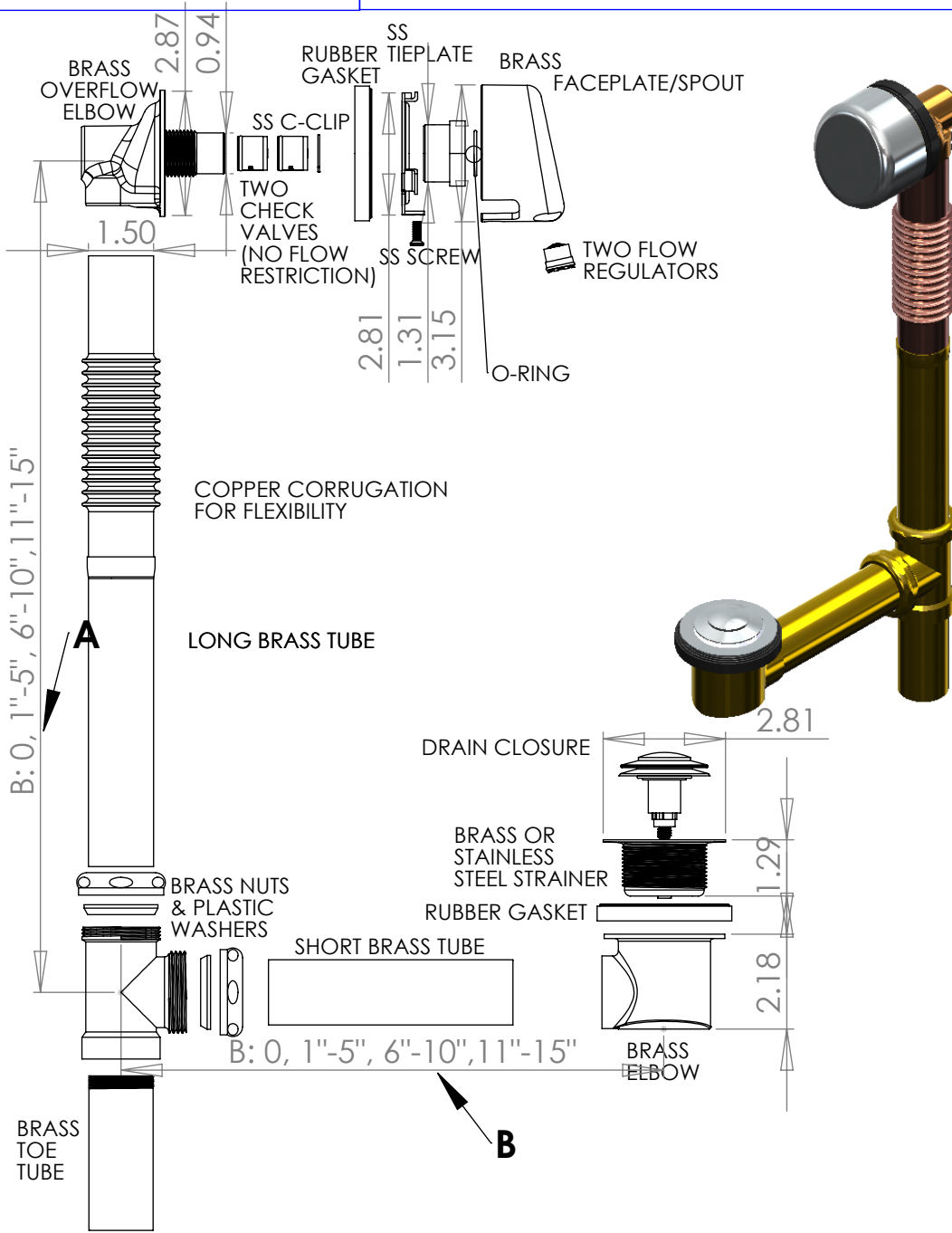




# FILL & DRAIN SERIES

## PRODUCT Specifications



a360xyz  
BRASS WASTE/OVERFLOWS with

- corrugated vertical
- retail or wholesale (a)
- choice of closure (x)
- choice of pipe length (y)
- choice of finish (z)
- certifications

### RETAIL OR WHOLESALE (a):

"R" = retail product  
[no prefix] = wholesale

### PIPE LENGTH SETS (y):

"K" = KIT WITH NO PIPE  
[no suffix] = (A) 10"-15" & (B) 1"-5"  
"20" = (A) 16"-20" & (B) 6"-10"  
"27" = (A) 21"-30" & (B) 11"-15"

### FINISHES AVAILABLE (z):

BCP = CHROME ON BRASS  
BN = BRUSHED NICKEL

### CERTIFICATIONS:



Drawn by: Chris McLeod  
Date: 2009/Aug/6th  
Checked by: Mike Pinet

**Oakville Stamping & Bending**  
2200 Speers Road  
Oakville, Ontario, Canada  
L6L 2X8  
www.osb.ca

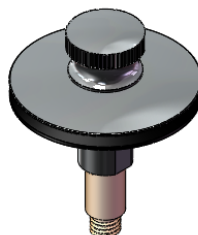
Units: Inches  
Scale: 1: 4 (line drawing)  
1: 5 (illustration)

brass or plastic top, plastic stem



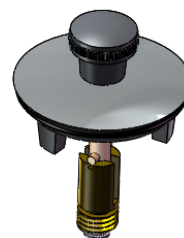
"Q" = CLICKER

brass



"PP" PUSH PULL

brass



"L" = LIFT & TURN

plastic



"TIP" = TIPTOE