



ID357

CAST IRON ISLAND TUB DRAIN™ (ROUGH-IN) - TESTABLE

Description:

Cast Iron Island Tub Drain™ (Testable Rough-in) for Freestanding Tubs

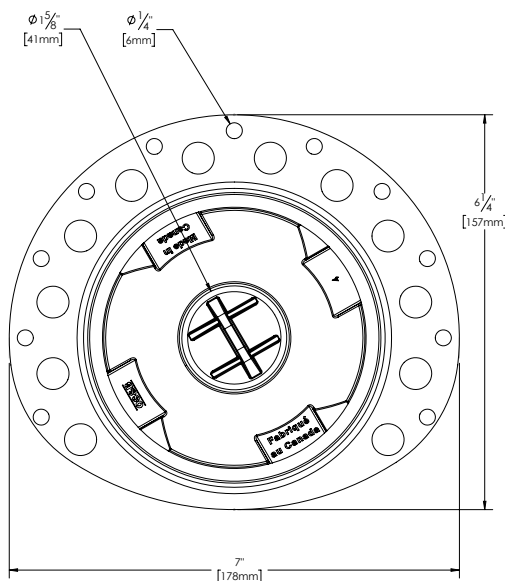
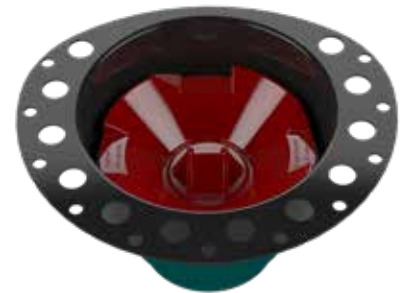
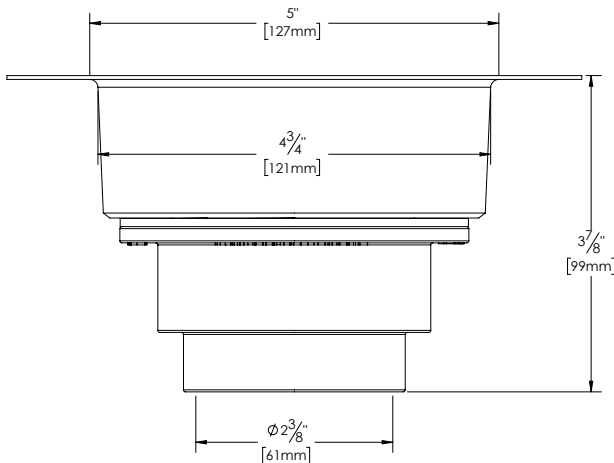
Features:

- Asymmetric design 18 Gauge Epoxy coated Metal Deck Plate with holes to lock to Thinset
- Snap off Test Cap
- Mortar/Tile Guard
- ID357 features a Cast Iron Body
- ID357 is a Freestanding Tub rough-in (install before tile installation)
- Designed to be installed in an 8"/10" joist space with 1-1/2" / 2" P-Trap respectively. Can also be installed in a slab on grade application.
- Supplied with Flanged Brass Tailpiece

Certification*



*The "cSAUS Meets UPC" mark means the product conforms to the requirements of the NPC, UPC, IPC and IRC.



Oakville Stamping and Bending Ltd.

2200 Speers Road, Unit C. Oakville, ON. Canada. L6L 2X8.

T. 905.827.0320 or toll free 1.877.314.6040 F. 905.827.6375 or toll free 1.877.827.6040.

All rights reserved. OS&B® reserves the right to change product specifications and material or discontinue models without notice.

www.osb.ca