

Now you have a choice.

Introducing our line of products for use in non-combustible buildings.

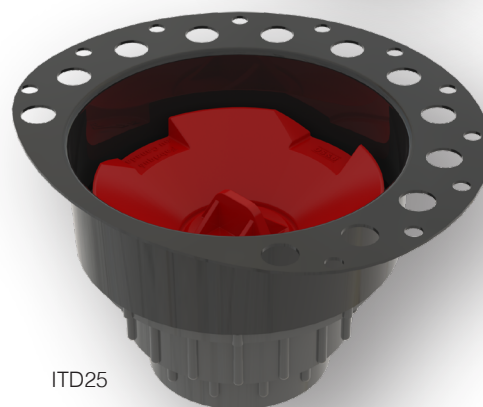
Your job just got easier.[®]

Features

- Meets flame and smoke requirements of CAN/ULC S102.2-10 for non-combustible buildings (use approved PVC primer and solvent cement to make joints).
- Will not support combustion in the presence of an ignition source.

Available products

- Offset and Direct style Waste/Overflows available in Testable and non-Testable models, Kit and Half Kit formats, and a choice of multiple closure mechanisms. Rough-in and Trim also available.
- ITD25 non-combustible FR PVC Island Tub Drain Testable Rough-in.
- 2" Drains for Molded and Tile shower bases in Round and Square models.



*Certifications



*The "cCSAus Meets UPC" mark means the product conforms to the requirements of the NPC, UPC, IPC and IRC.