



PRODUCT BULLETIN

Testable Bath Drain Rough-in and Trim Program

Your job just got a lot easier.™

Introducing our Testable Bath Drain Rough-in and Trim Program (Sold separately). Available in ABS, PVC or Brass Offset and Direct styles. Packed with category leading features.

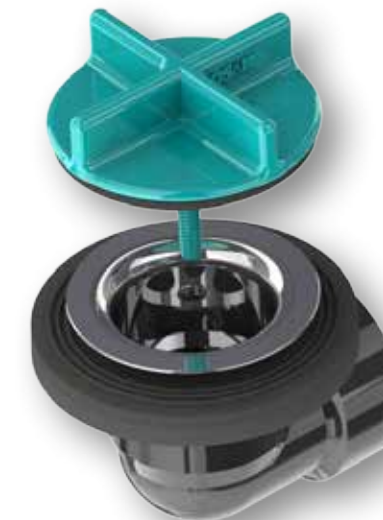
Your job just got a lot easier.™

Features

- Spin-on Tie Plate features a snap off Test Cap. Cannot install Overflow Plate without removing Test Cap.
- Waste Shoe Test Plug.
- Angle Adapter to address Tub slope (on ABS and PVC Models).
- Corrugated Overflow tube to address Tub slope (on Brass Models)
- Available in ABS (Black) and PVC (White) Full Kit (with Tee) or Half Kit (less Tee) configurations. All less Pipe.
- Also available in Brass (with Tube).
- Available in Clicker®, Twirl™ or Plug & Chain Drain Closures in today's most popular Finishes.



Certification



ABS Offset Testable
Rough-in Full Kit shown

Rough-in Kits for Testable Bath Drains

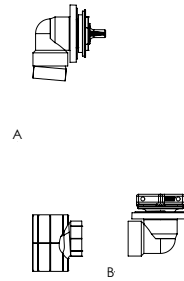
1 1-1/2" ABS Sch. 40 DWV Material Rough-in Suffix



2 ABS Kit Suffix

SUFFIX	A	B	NOTE
K	NO PIPE	NO PIPE	FULL KIT. WITH TEE. LESS PIPE.
HK	NO PIPE	NO PIPE	HALF KIT. LESS TEE. LESS PIPE.

* Half Kit model shown



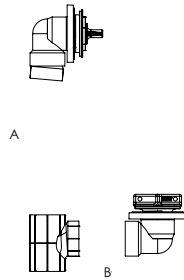
1 1-1/2" PVC Sch. 40 DWV Material Rough-in Suffix



2 PVC Kit Suffix

SUFFIX	A	B	NOTE
K	NO PIPE	NO PIPE	FULL KIT. WITH TEE. LESS PIPE.
HK	NO PIPE	NO PIPE	HALF KIT. LESS TEE. LESS PIPE.

* Half Kit model shown

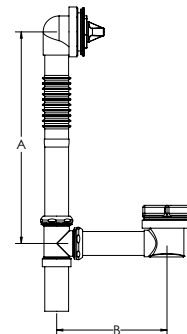


1 1-1/2" Brass Material Rough-in Suffix

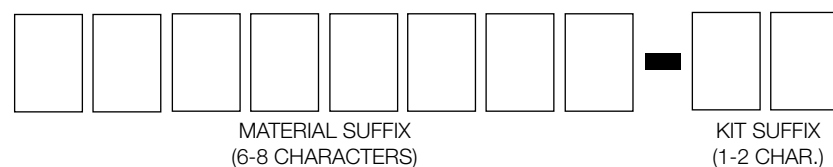


2 Brass Suffix

SUFFIX	A	B	NOTE
NO SUFFIX	13-1/2"	7"	FITS MOST TUBS UP TO 16" HIGH.
20	20"	8-1/2"	FITS MOST TUBS UP TO 20" HIGH.



Part # Configurator (example: 7030TDRI-HK)



1

2

Trim Kits for Testable Bath Drains

1 SlideON™ Faceplate Suffix

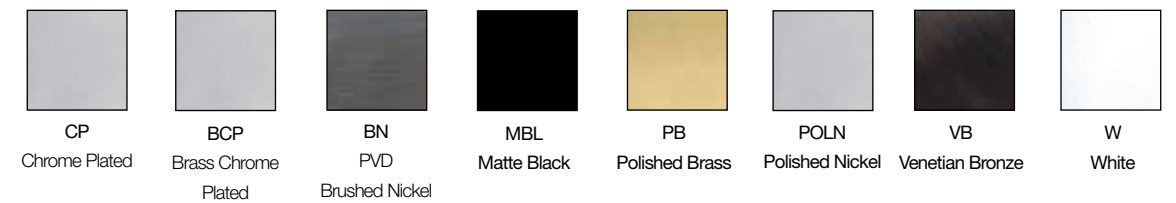


2 Closure Suffix

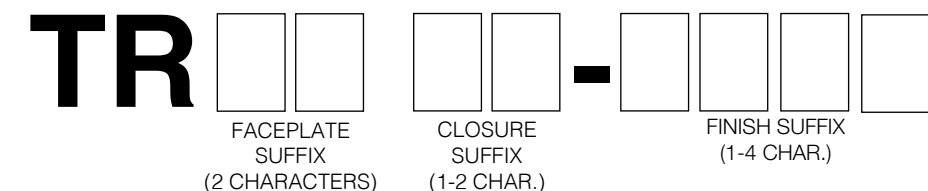


3 Finish Suffix (Availability by Closure)

CLOSURE	FINISH SUFFIX							
	CP	BCP	BN	MBL	PB	POLN	VB	W
Q - Clicker®	√	√	√	√	√	√	√	√
T - Twirl™	√	-	√	-	-	-	√	-
CS - Plug & Chain	√	-	-	-	-	-	-	-



Part # Configurator (example: TR00T-CP)



1

2

3