

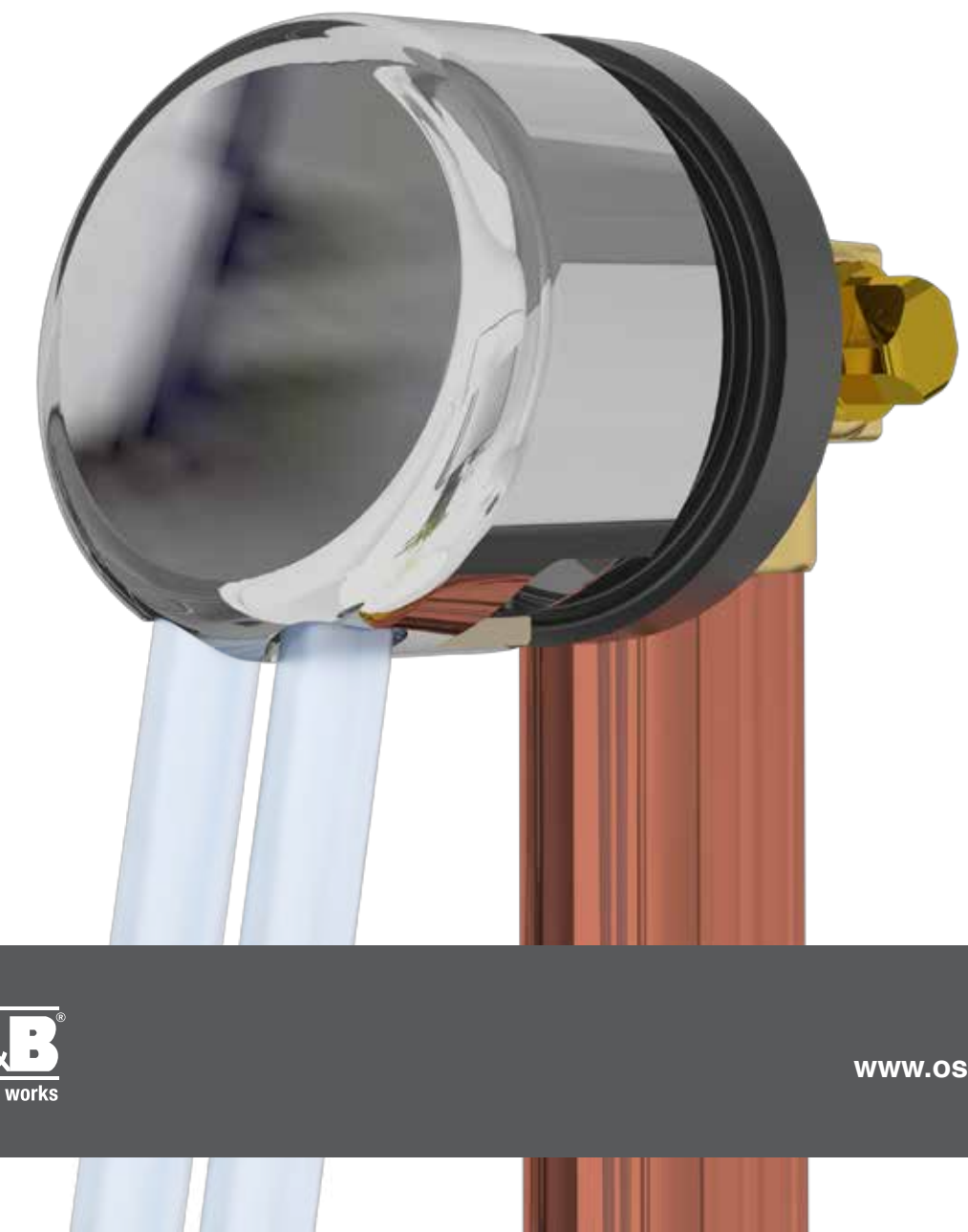


Dare to go spoutless.

The state of the art 360 Fill&Drain™ Bath Drain features an integral tub filler, offering your customer the combined functionality and convenience of Filling and Draining their tub with one integral unit.

Eliminates the need for a traditionally mounted spout above the tub well.

Your job just got easier.™



OS&B® reserves the right to change product specifications without notice.
Clicker® is a Registered Trademark of Oakville Stamping & Bending Ltd.
Fill&Drain™ is a Trademark of Oakville Stamping & Bending Ltd.
Twirl™ is a Trademark of Oakville Stamping & Bending Ltd. and is Patented in Canada and the United States of America.

OS&B is a Registered Trademark of Oakville Stamping and Bending Limited (OS&B®).

Oakville Stamping & Bending Ltd.
T: 1.905.827.0320 1.877.314.6040 F: 1.905.827.6375 1.877.827.6040
www.osb.ca (Canada) www.osbplumbing.com (USA)



www.osb.ca
www.osbplumbing.com

Fill&Drain™ . Dare to go spoutless.



“Eliminating the spout from the installation opened up so many design opportunities... It allowed us to offer our client something unique and truly special... A real game changer.”

Features and Benefits

- Two flow restricting Aerators featuring anti-clogging technology = Delivers a total of 5.17 GPM (US) at a pressure of 60psi
- Also included with each Fill&Drain™ package are 2 Full Flow laminar stream straighteners for increased flow* = Provides a splash free laminar stream
- We drain what we fill even with the drain closure in the closed position = No more overflowed tubs*!
- Features built-in Backflow Technology (serviceable from inside the Tub) = No Vacuum Breaker required**
- Aerator removal tool included
- New Dual 1/2" FIP supply Connections (1 on each side of Overflow Elbow). Simply plug (plug included) the unused connection = Easier installation in shallow wall spaces
- Corrugated Copper Overflow tube = Maximum adjustability
- Twist+Lock style brass Faceplate (with vandal proof screw) mounting = Simple installation and secure fit

Certification**



*The "cSAus Meets UPC" mark means the product conforms to the requirements of the NPC, UPC**, IPC and IRC.

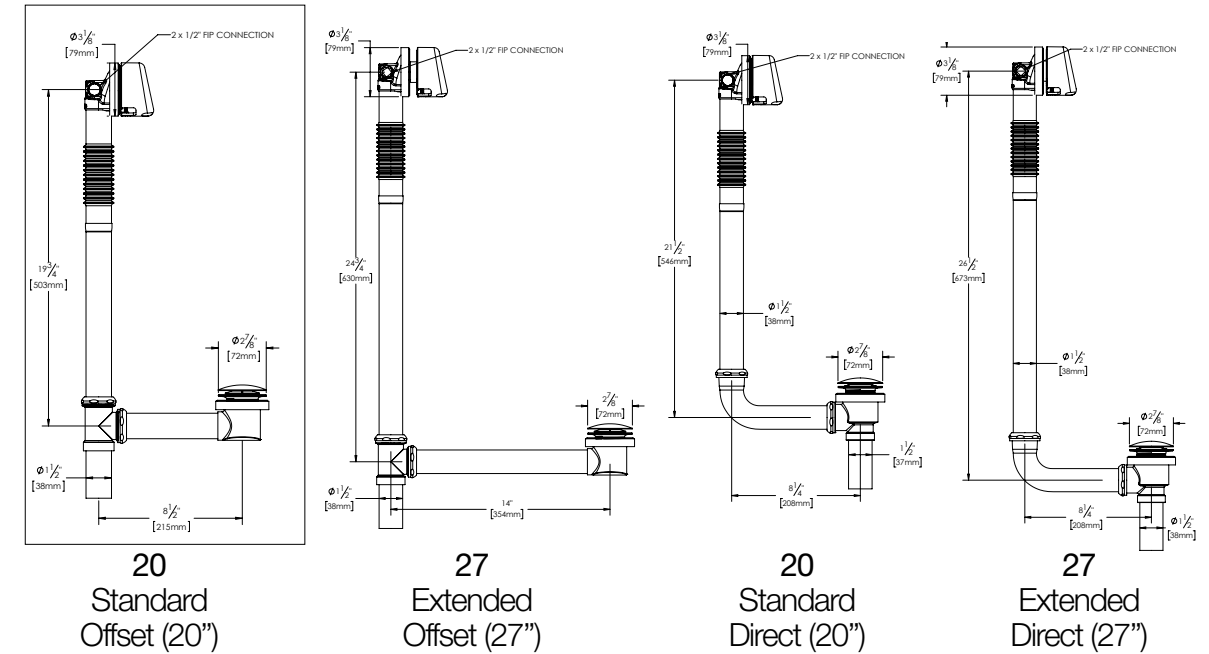
*NOTE: Tub can overflow if full flow laminar stream straighteners installed.

**NOTE: Where UPC is a referenced Code, a vacuum breaker must be installed with its critical level at least 1" above the flood level rim of the fixture between the tub filler and the hot and cold water mixing valves. The vacuum breaker shall comply with ASSE 1001.

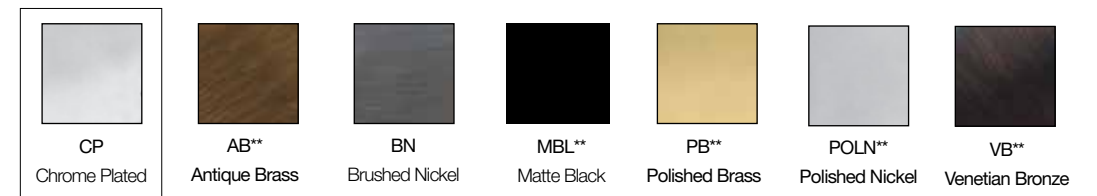
1 Closure Suffix



2 Length Suffix



3 Finish Suffix



**Available as a Special Order. Other Finishes may be available. Please contact us for availability, pricing and lead time.

Part # Configurator - example 360-5FDQ-20CP

360-5FD -

Substitute with 360D-5FD for Direct style

CLOSURE SUFFIX (1 CHAR.)

LENGTH SUFFIX (2 CHAR.)

FINISH SUFFIX (2-4 CHAR.)

1

2

3